

Bridge Unit Type 1045
(B397)

Bridge Unit Type 1045 (B397)

PARTS CATALOG

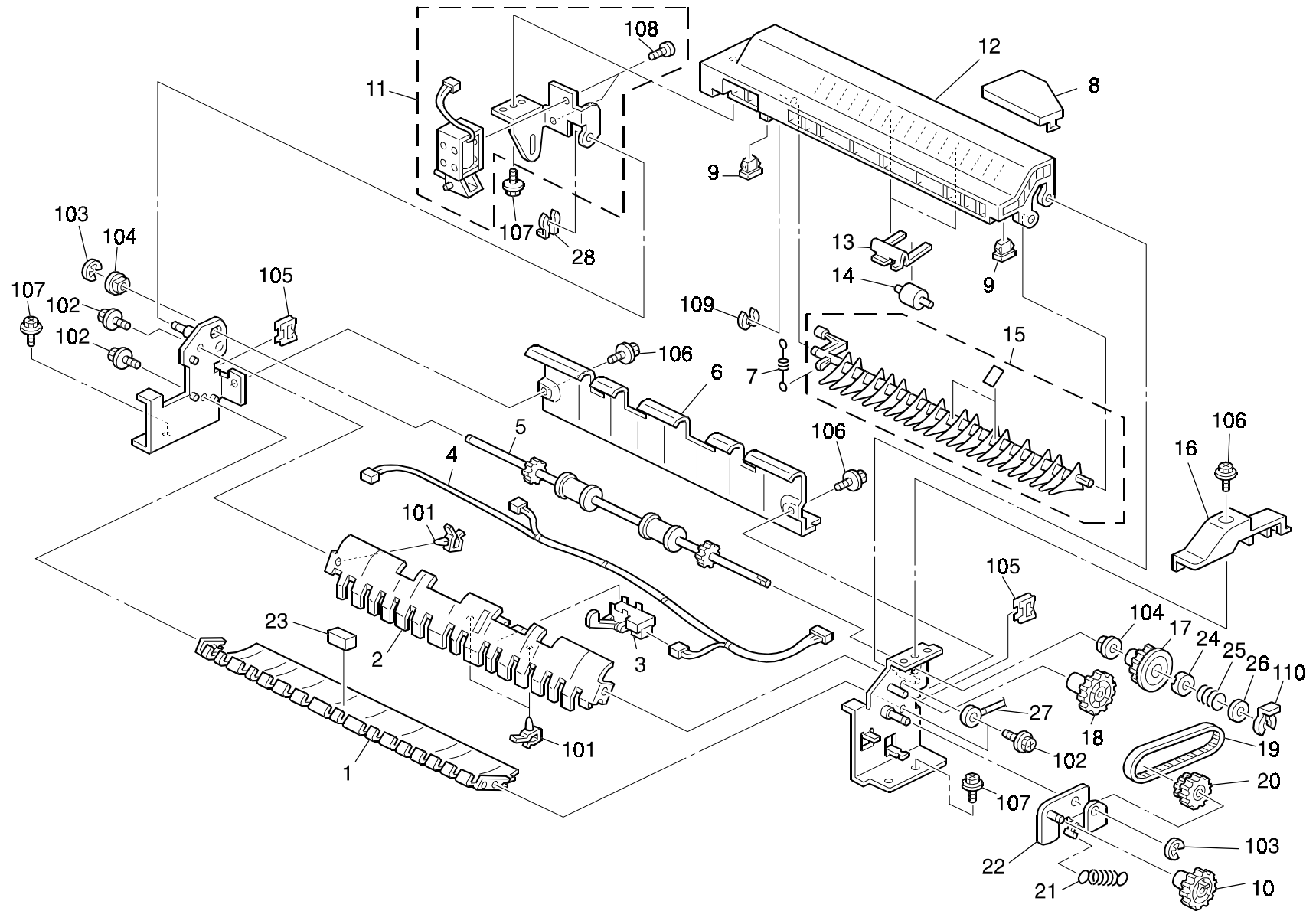
This catalog gives the numbers and names of parts on this machine.

CONTENTS


1.BRIDGE UNIT 1 (B397).....	2
2.BRIDGE UNIT 2 (B397).....	4
PARTS INDEX	7

February ,5 ' 2001

1.BRIDGE UNIT 1 (B397)

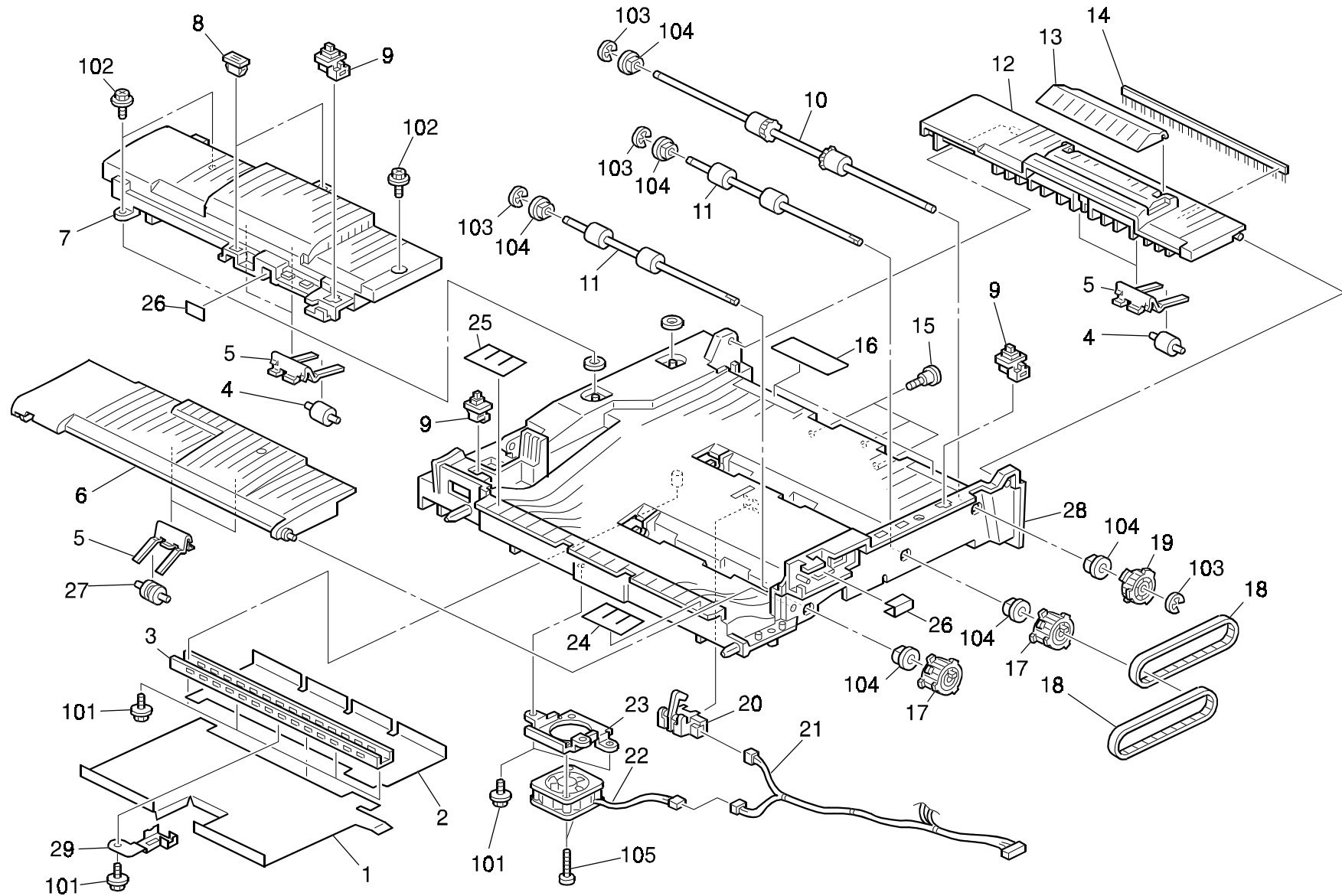


1.BRIDGE UNIT 1 (B397)

Index No.	Part No.	Description	Q'ty Per Assembly
1	A688 4478	Lower Guide Plate	1
2	A688 4453	Upper Guide Plate	1
3	AW02 0098	Photosensor	1
4	A232 5436	Exit Relay Harness	1
5	AF02 0418	Exit Roller	1
6	A688 4456	Right Exit Cover	1
7	AA06 6579	Tension Spring	1
8	A688 1350	Connector Cover	1
9	AA02 1031	Magnetic Catch	2
10	AB01 4054	Gear - 20Z	1
11	A688 4485	Junction Gate Solenoid	1
12	A688 4481	Upper Exit Cover	1
13	A688 4482	Roller Holder	2
14	AF04 0558	Driven Roller	2
15	A688 4490	Junction Gate Ass'y	1
16	A688 1300	Rear Cover	1
17	AB01 4174	Exit Gear - 21Z	1
18	AB01 4055	Gear - 24Z	1
19	AA04 3448	Timing Belt - S2M 216	1
20	AB01 7459	Gear/pulley - 16Z/26T	1
21	AA06 6578	Tension Spring	1
22	A688 4471	Gear Bracket	1
23	AA16 1082	Cushion - Mirror	1
24	A688 4473	Disc - Torque Limiter	1
25	AA06 3332	Pressure Spring	1
26	A688 4474	Spacer - T2	1
27	A284 5510	Grounding Harness	1
28	5447 2681	Snap Ring	1
			

Index No.	Part No.	Description	Q'ty Per Assembly
101	1105 0283	Clamp	
102	0451 3006B	Tapping Screw - M3x6	
103	0720 0040E	Retaining Ring - M4	
104	0805 3480	Bushing - 6mm	
105	1105 0328	Harness Clamp - ES-0505	
106	0451 3006H	Tapping Screw - 3x6	
107	0450 3008B	Tapping Screw - M3x8	
108	0951 3004B	Philips Pan Head Screw - M3x4	
109	0805 0089	Retaining Ring - M4	
110	0805 0097	Ring Separator	

2.BRIDGE UNIT 2 (B397)



2.BRIDGE UNIT 2 (B397)

Index No.	Part No.	Description	Q'ty Per Assembly
1	A688 3918	Right Base Sheet	1
2	A688 3919	Left Base Sheet	1
3	A688 3913	Support Plate	1
4	AF04 0558	Driven Roller	4
5	A688 3960	Roller Holder	6
6	A688 3964	Right Joint Cover	1
7	A688 3980	Middle Cover	1
8	AA02 1030	Magnet Catch	2
9	AW50 0022	Push Switch	3
10	AF02 0417	Right Transport Roller	1
11	AF02 0416	Transport Roller	2
12	A688 3988	Left Joint Cover	1
13	A688 3995	Support Tray	1
14	AA12 0089	Antistatic Brush	1
15	AA14 3219	Stepped Screw	3
16	A688 3915	Guide Sheet	1
17	AB03 0569	Pulley - 30T	2
18	AA04 3449	Timing Belt - S2M 316	2
19	AB03 0570	Pulley - 30T	1
20	AW02 0098	Photosensor	1
21	A232 5429	Relay Harness	1
22	AX64 0085	Fan Motor - DC 1.68W	1
23	A688 3912	Motor Bracket	1
24	A688 3916	Rear Mylar Guide	1
25	A688 3917	Front Mylar Guide	1
26	G012 3897	Sheet - 13x30	2
27	AF04 0562	Driven Roller	2
28	A688 3910	Bridge Unit Base	1
29	A688 3914	Spring Plate	1

Index No.	Part No.	Description	Q'ty Per Assembly
101	0450 3008B	Tapping Screw - M3x8	
102	0450 3008Z	Tapping Screw - M3x8	
103	0720 0040E	Retaining Ring - M4	
104	0805 3480	Bushing - 6mm	
105	0313 0220B	Philips Pan Head Screw - M3x22	
106	0451 3006B	Tapping Screw - M3x6	

Parts Index

Parts Index

Part No.	Description	Page and Index No.
AA02 1030	Magnet Catch	5- 8
AA02 1031	Magnetic Catch	3- 9
AA04 3448	Timing Belt - S2M 216	3- 19
AA04 3449	Timing Belt - S2M 316	5- 18
AA06 3332	Pressure Spring	3- 25
AA06 6578	Tension Spring	3- 21
AA06 6579	Tension Spring	3- 7
AA12 0089	Antistatic Brush	5- 14
AA14 3219	Stepped Screw	5- 15
AA16 1082	Cushion - Mirror	3- 23
AB01 4054	Gear - 20Z	3- 10
AB01 4055	Gear - 24Z	3- 18
AB01 4174	Exit Gear - 21Z	3- 17
AB01 7459	Gear/pulley - 16Z/26T	3- 20
AB03 0569	Pulley - 30T	5- 17
AB03 0570	Pulley - 30T	5- 19
AF02 0416	Transport Roller	5- 11
AF02 0417	Right Transport Roller	5- 10
AF02 0418	Exit Roller	3- 5
AF04 0558	Driven Roller	3- 14
AF04 0558	Driven Roller	5- 4
AF04 0562	Driven Roller	5- 27
AW02 0098	Photosensor	5- 20
AW02 0098	Photosensor	3- 3
AW50 0022	Push Switch	5- 9
AX64 0085	Fan Motor - DC 1.68W	5- 22
G012 3897	Sheet - 13x30	5- 26

Part No.	Description	Page and Index No.
A232 5429	Relay Harness	5- 21
A232 5436	Exit Relay Harness	3- 4
A284 5510	Grounding Harness	3- 27
A688 1300	Rear Cover	3- 16
A688 1350	Connector Cover	3- 8
A688 3910	Bridge Unit Base	5- 28
A688 3912	Motor Bracket	5- 23
A688 3913	Support Plate	5- 3
A688 3914	Spring Plate	5- 29
A688 3915	Guide Sheet	5- 16
A688 3916	Rear Mylar Guide	5- 24
A688 3917	Front Mylar Guide	5- 25
A688 3918	Right Base Sheet	5- 1
A688 3919	Left Base Sheet	5- 2
A688 3960	Roller Holder	5- 5
A688 3964	Right Joint Cover	5- 6
A688 3980	Middle Cover	5- 7
A688 3988	Left Joint Cover	5- 12
A688 3995	Support Tray	5- 13
A688 4453	Upper Guide Plate	3- 2
A688 4456	Right Exit Cover	3- 6
A688 4471	Gear Bracket	3- 22
A688 4473	Disc - Torque Limiter	3- 24
A688 4474	Spacer - T2	3- 26
A688 4478	Lower Guide Plate	3- 1
A688 4481	Upper Exit Cover	3- 12
A688 4482	Roller Holder	3- 13
A688 4485	Junction Gate Solenoid	3- 11
A688 4490	Junction Gate Ass'y	3- 15

Part No.	Description	Page and Index No.
5447 2681	Snap Ring	3- 28

Part No.	Description	Page and Index No.
0313 0220B	Philips Pan Head Screw - M3x22	5-105
0450 3008B	Tapping Screw - M3x8	3-107
0450 3008B	Tapping Screw - M3x8	5-101
0450 3008Z	Tapping Screw - M3x8	5-102
0451 3006B	Tapping Screw - M3x6	3-102
0451 3006B	Tapping Screw - M3x6	5-106
0451 3006H	Tapping Screw - 3x6	3-106
0720 0040E	Retaining Ring - M4	3-103
0720 0040E	Retaining Ring - M4	5-103
0805 0089	Retaining Ring - M4	3-109
0805 0097	Ring Separator	3-110
0805 3480	Bushing - 6mm	5-104
0805 3480	Bushing - 6mm	3-104
0951 3004B	Philips Pan Head Screw - M3x4	3-108
1105 0283	Clamp	3-101
1105 0328	Harness Clamp - ES-0505	3-105